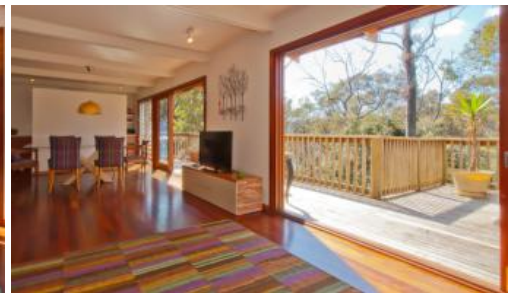


Sold

39 Thompson St, Scotland Island



Ideal first home with a lifestyle

This neat two story home faces east and is nestled in amongst tall gums with filtered views of Pittwater.

Situated on a large block of approx 828 sqm, the property has dual road access and is located close to the ferry wharf.

The light and bright upper level is open plan, a combined kitchen, lounge/dining room with doors opening out to a spacious front deck and a rear covered patio.

The lower level consists two large bedrooms, a central and modern bathroom and a spacious under cover area with ample storage.

Featuring polished timber floors throughout, this property is an ideal first home, investment or perfect for upgrading from a unit.

The above information provided has been furnished to us by the vendor/s. We have not verified whether or not that information is accurate and do not have any belief in one way or the other in its accuracy. We do not accept any responsibility to any person for its accuracy and do no more than pass it on. All interested parties should make and rely upon their own inquiries in order to determine whether or not this information is in fact accurate.

 2  1  828 m2

Price	SOLD
Property Type	Residential
Property ID	350
Land Area	828 m2

Agent Details

Melanie Marshall - 0415 440 662

Office Details

PMC Hill Real Estate
02 9999 4902

